

## Low Voltage Fuse

Professional High Voltage And Low Voltage Fuse Manufacturer

# Fuse Alarms



## Fuse Alarms



### ► Applications

This series of fuse alarms are used in electric lines of 50Hz AC and rated voltage up to 1000V as melting signal/siren for the fuse links.

### ► Design Features

It is made up of the following parts: 1. Melt striker; 2. Micro switch (with one normal close contact and one normal open contact); 3. A base for the striker and the switch.

Fuse alarms are usually paralleled under the lid fastening screws at the ends of the fuse. When the fuse breaks, the striking pin springs out of the striker, the microswitch pushed and signal sent out or circuit cut down. The distance between the two fastening ends can be adjusted in a certain range for paralleling to fuses with different heights.

### ► Basic Data

Models, rated voltage and dimensions are shown in Figure 13.1~13.2 and Table 13 .

Table 13

Cat. No.	Models	Components *	Rated insulation voltage(V)	Dimensions (mm)						Weight (g)
				Fig.	L1	L2	D	d	A	
1301**	RX1-1000 RX2-1000	Striker	1000	13.1	82	89	11	7.5	7.5	17
1302	RZS1-1000	Striker	1000	13.1	58	64	11	5	12	15.5
1303	RX1A-1000	Striker	1000	13.1	55	60	8.5	3.5	7.5	12.5

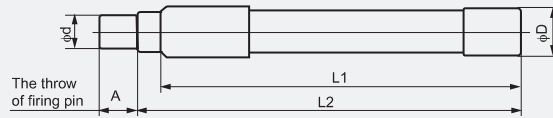


Figure 13.1



Table 13 (cont.)

Cat. No.	Models	Components *	Rated insulation voltage(V)	Dimensions (mm)						Weight (g)
				Fig.	L1	L2	D	d	A	
1304**	RX1-1000 RX2-1000	Striker base	1000	13.2	54.5	114	27	22.5	41~88	42
1305	RZS1-1000	Striker base	1000	13.2	36.5	90	28	26	30~72	33
1306	RX1A-1000	Striker base		Prepared and decided by the customer						27

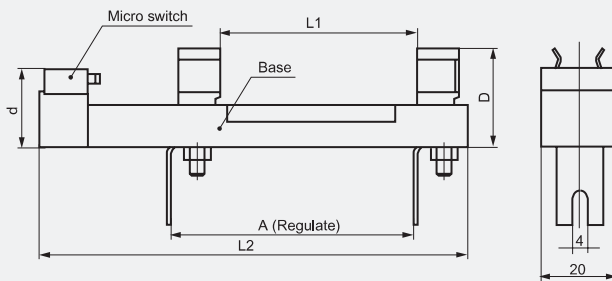


Figure 13.2



Note: \* The model for the striker and striker base is the same, but the name is different.  
 \*\* RX1-1000 and RX2-1000 same in dimensions and technical data.